

2023
Term 3, Week 8

GILLWINGA GAZETTE

RESPECTFUL, RESPONSIBLE, RESILIENT





UPCOMING EVENTS

Halloween

Term 3

REWARDS DAY

Disco! Tuesday Week 10

5 Star

45 minutes

+ Lolly Bag and prize draw

4 Star

45 Minutes

3 Star

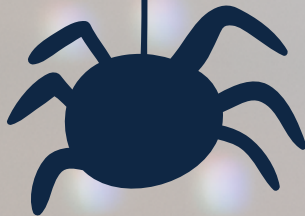
30 minutes

2 Star

15 Minutes

1 Star

10 Minutes



Cafe 95

Students who attend 95% for the term are invited with their parents to celebrate with a special morning tea prepared by our in house chefs in training :)



**Family
Fun
Day**

THURSDAY 19TH
OCTOBER 2023
AT GILLWINGA PS
10AM TIL 2

PRINCIPALS ADDRESS

By Carly Woods

Hi Families,

Tell them From ME parent survey .

Your feedback on your students school is valued and important. Please take the time to complete the survey. Results from last year were positive and have been used to plan this years activities. Please see link or scan QR code to access the survey below:

<http://nsw.tellthemfromme.com/gps2023>

Student absences

- please provide an explanation for your childs' absence, the roll is a legal document.
- simply explain by texting, calling or replying to Sentral text.
- justified reasons include sick , funeral , religious holiday, sorry business, medical appointment.



PBL Focus

Strength in our choices



Whats happening at GPS?

YLEAD

Our yer 5/6 students had a great day learning and being e empowered to be the best leaders they can be. Throughout the day the students explored the acronym HEART in a series of fun challenges that summarise:

H elpful – looking out for everyday actions that enrich the lives of others.

E nergetic – promoting and sharing positive energy.

A ctive and **A** ware – becoming more aware of personal strengths and how they can be used to take positive action as a leader.

R esilient – the importance of having the courage to try new things, and learning to respond positively to challenging or difficult situations.

T eam player – the importance of working with others in an encouraging and supportive environment



Camp

Stage 2 Camp.

During Week 7, 26 excited students from Stage 2 journeyed to Currumbin Community Farm Campus on the Gold Coast, to participate in a three day camp centered around connecting to Country. They left Gillwanga bright and early on Wednesday morning, and were welcomed to country by Uncle Steve, a local Bundjalung elder, who shared his wisdom on the energy of Country that is shared by the people connected to it.

During camp, students enjoyed using natural materials to build shelters and traditional methods to weave, make fire and string, and cook damper over an open fire. They learned about Aboriginal technologies, and learned to use a spear thrower and different types of boomerang, played traditional games and tried bush foods. They explored, observed, played and connected with country at the Cougal Cascades in Sprinbrook National Park. They painted story rocks to tell the story of their visit. All the students demonstrated their thanks to Country by being respectful, resilient and eager to contribute to shared jobs like cleaning the dining room and sweeping the verandahs.

Our thanks go to all the staff at Currumbin Community Farm Campus for a terrific camp experience for our Stage 2 students.



Smiling Minds Focus

Awareness

Learning intention

We are learning:

- to explore what awareness is
- to build self-awareness by practising a body scan meditation

ATTENDANCE

DUNGLIRR

Week 7 Winners - 5/6W

Ice cream Party

School attendance target

85% of students attending 90% of the time

Current attendance

51.9% of students attending >90% of the time



Community News





WESTLAWN CRICKET CLUB

**ACTIVE KIDS VOUCHERS
ACCEPTED**



SPORTSPower

With thanks to Sportspower Grafton

**All new Junior Registrations
will receive a \$10 Voucher**

Bring on a massive Summer of Cricket



Registrations are open!
Come and Join the Westlawn Cricket Club Family

2023/24 Season Kicks off Week 1 Term 4
BIG BASH T20 FORMAT
U10s Saturday Mornings from 9am
U12s & U17s Friday Afternoon from 4pm
U14s Thursday Afternoon from 4pm

Follow us on Facebook @ Westlawn Cricket Club



CVCON YOUTH VOICES
want you! students Yr5 - 12

Mondays 5.00 - 6.00pm
Phone or email now to book your place.
Ph: 6643 3555 | cvcon@cvcon.nsw.edu.au



Grafton Local AEGG

Notice of General Meeting

**15 September 2023
12 noon
Grafton High School
97 Mary St Grafton**

Membership

We would like to invite families to join the Grafton AEGG to be an integral part of Aboriginal Education.

You can sign up to be a local member by attending the next meeting and paying the \$2.00 membership fee.

All members of the community can become members of the AEGG, but only Aboriginal adults (18 years and over) can vote and hold office bearers positions.

One of the goals for 2023 is that we would like to have more Aboriginal people involved from community and those working within our local schools.

We can arrange merit selection training online, or as a group.

WHAT CAN YOU DO WHILE YOU'RE A MEMBER OF THE AEGG

- Work on programs for Education
- Help the community to be a part of local schools
- Be a member of a selection panel for vacant teaching positions

For more information

- Find our group on Facebook
- <http://www.aegg.nsw.edu.au>
- email glocal@nsw.edu.au

**ABORIGINAL
EDUCATION
CONSULTATION
GROUP**